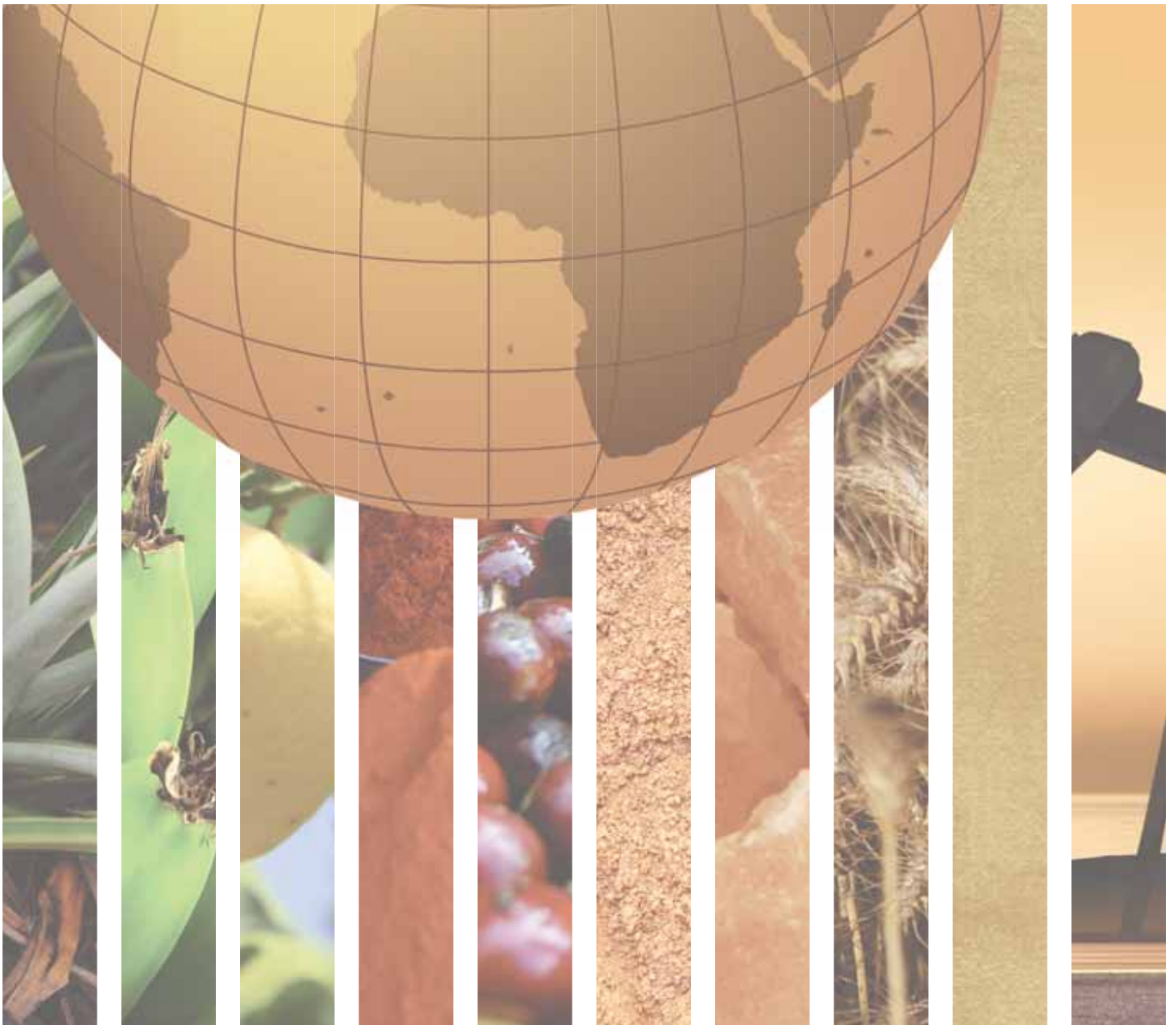


SOUTH-EASTERN ASIA





BRUNEI DARUSSALAM		CAMBODIA	
GENERAL INFORMATION		GENERAL INFORMATION	
Total area (square kilometres), 2009	5,770	Total area (square kilometres), 2009	181,040
Agricultural area (as a percentage of total area), 2009	2	Agricultural area (as a percentage of total area), 2009	31
Population (1,000 inhabitants), 2010	399	Population (1,000 inhabitants), 2010	14,138
Labour force (1,000 workers), 2010	191	Labour force (1,000 workers), 2010	7,541
Women in labour force (as a percentage of total labour force), 2010	45	Women in labour force (as a percentage of total labour force), 2010	48
Labour force in agriculture (as a percentage of total labour force), 2010	1	Labour force in agriculture (as a percentage of total labour force), 2010	66
Women in agriculture (as a percentage of labour force in agriculture), 2010	–	Women in agriculture (as a percentage of labour force in agriculture), 2010	51
Gross Domestic Product (GDP) (in millions of US\$), 2010	12,797	Gross Domestic Product (GDP) (in millions of US\$), 2010	11,362
GDP by economic activity (as a percentage of GDP), 2009 (agriculture / industry / services)	1/73/26	GDP by economic activity (as a percentage of GDP), 2009 (agriculture / industry / services)	33/26/41
COMMODITY EXPORT DEPENDENCE		COMMODITY EXPORT DEPENDENCE	
Commodity exports (in millions of US\$ and as a percentage of merchandise exports), 2009-2010	8'035 (98%)	Commodity exports (in millions of US\$ and as a percentage of merchandise exports), 2009-2010	511 (10%)
Commodity exports (as a percentage of GDP), 2009-2010	69	Commodity exports (as a percentage of GDP), 2009-2010	5
Exports by commodity groups (as a percentage of total commodity exports), 2009-2010		Exports by commodity groups (as a percentage of total commodity exports), 2009-2010	
All food items	–	All food items	26
Agricultural raw materials	–	Agricultural raw materials	31
Fuels	100	Fuels	–
Ores, metals, precious stones and non-monetary gold	–	Ores, metals, precious stones and non-monetary gold	42
Three leading commodity exports (as a percentage of commodity exports), 2009-2010	100	Three leading commodity exports (as a percentage of commodity exports), 2009-2010	55
(333) Petroleum oils, oils from bitumin. materials, crude	56	(231) Natural rubber & similar gums, in primary forms	21
(343) Natural gas, whether or not liquefied	43	(971) Gold, non-monetary (excluding gold ores and concentrates)	18
(334) Petroleum oils or bituminous minerals > 70 % oil	1	(273) Stone, sand and gravel	16
Leading destination markets for commodity exports (as a percentage of commodity exports), 2009-2010	87	Leading destination markets for commodity exports (as a percentage of commodity exports), 2009-2010	87
Japan, Republic of Korea, Australia, Indonesia, China	48/13/11/9/6	Singapore, Viet Nam, Thailand, China, EU (27)	34/30/14/6/3
Export concentration ratio	(2000) 0.5906 (2010) 0.6724	Export concentration ratio	(2000) 0.3405 (2010) 0.3371
Membership in international commodity bodies	–	Membership in international commodity bodies	ITTO
FOOD SECURITY		FOOD SECURITY	
Commodity import value (in millions of US\$ and as a percentage of merchandise import value), 2009-2010	674 (23%)	Commodity import value (in millions of US\$ and as a percentage of merchandise import value), 2009-2010	2,356 (36%)
Net food imports (in millions of US\$), 2010	647	Net food imports (in millions of US\$), 2010	655
MDG 1.1: Percentage of population below 1US\$ (PPP) per day, 1990/92 and 2007/09	n.a.	MDG 1.1: Percentage of population below 1US\$ (PPP) per day, 1990/92 and 2007/09	49 - 28
MDG 1.9: Percentage of the population undernourished, 1991 and 2007	5 - 5	MDG 1.9: Percentage of the population undernourished, 1991 and 2007	38 - 25



INDONESIA		LAO PEOPLE'S DEMOCRATIC REPUBLIC	
GENERAL INFORMATION		GENERAL INFORMATION	
Total area (square kilometres), 2009	1,904,570	Total area (square kilometres), 2009	236,800
Agricultural area (as a percentage of total area), 2009	28	Agricultural area (as a percentage of total area), 2009	10
Population (1,000 inhabitants), 2010	239,871	Population (1,000 inhabitants), 2010	6,201
Labour force (1,000 workers), 2010	119,541	Labour force (1,000 workers), 2010	3,161
Women in labour force (as a percentage of total labour force), 2010	37	Women in labour force (as a percentage of total labour force), 2010	50
Labour force in agriculture (as a percentage of total labour force), 2010	41	Labour force in agriculture (as a percentage of total labour force), 2010	75
Women in agriculture (as a percentage of labour force in agriculture), 2010	39	Women in agriculture (as a percentage of labour force in agriculture), 2010	52
Gross Domestic Product (GDP) (in millions of US\$), 2010	708,396	Gross Domestic Product (GDP) (in millions of US\$), 2010	6,457
GDP by economic activity (as a percentage of GDP), 2009 (agriculture / industry / services)	15/48/37	GDP by economic activity (as a percentage of GDP), 2009 (agriculture / industry / services)	32/25/43
COMMODITY EXPORT DEPENDENCE		COMMODITY EXPORT DEPENDENCE	
Commodity exports (in millions of US\$ and as a percentage of merchandise exports), 2009-2010	84,572 (62%)	Commodity exports (in millions of US\$ and as a percentage of merchandise exports), 2009-2010	1,114 (81%)
Commodity exports (as a percentage of GDP), 2009-2010	14	Commodity exports (as a percentage of GDP), 2009-2010	19
Exports by commodity groups (as a percentage of total commodity exports), 2009-2010		Exports by commodity groups (as a percentage of total commodity exports), 2009-2010	
All food items	27	All food items	10
Agricultural raw materials	9	Agricultural raw materials	16
Fuels	47	Fuels	17
Ores, metals, precious stones and non-monetary gold	17	Ores, metals, precious stones and non-monetary gold	57
Three leading commodity exports (as a percentage of commodity exports), 2009-2010	48	Three leading commodity exports (as a percentage of commodity exports), 2009-2010	71
(321) Coal, whether or not pulverized, not agglomerated	19	(682) Copper	30
(422) Fixed vegetable fats & oils, crude, refined, fract.	16	(283) Copper ores and concentrates; copper mattes, cemen	25
(343) Natural gas, whether or not liquefied	13	(351) Electric current	16
Leading destination markets for commodity exports (as a percentage of commodity exports), 2009-2010	60	Leading destination markets for commodity exports (as a percentage of commodity exports), 2009-2010	99
Japan, China, Republic of Korea, India, EU (27)	20/13/10/9/8	Thailand, China, Viet Nam, EU (27), Japan	47/39/9/3/1
Export concentration ratio	(2000) 0.1254 (2010) 0.1552	Export concentration ratio	(2000) 0.2964 (2010) 0.3140
Membership in international commodity bodies	INBAR, ICO, ISO, ITTO	Membership in international commodity bodies	–
FOOD SECURITY		FOOD SECURITY	
Commodity import value (in millions of US\$ and as a percentage of merchandise import value), 2009-2010	38,837 (34%)	Commodity import value (in millions of US\$ and as a percentage of merchandise import value), 2009-2010	562 (33%)
Net food imports (in millions of US\$), 2010	- 14,309	Net food imports (in millions of US\$), 2010	108
MDG 1.1: Percentage of population below 1US\$ (PPP) per day, 1990/92 and 2007/09	54 - 22	MDG 1.1: Percentage of population below 1US\$ (PPP) per day, 1990/92 and 2007/09	56 - 34
MDG 1.9: Percentage of the population undernourished, 1991 and 2007	16 - 13	MDG 1.9: Percentage of the population undernourished, 1991 and 2007	31 - 22



MALAYSIA		MYANMAR	
GENERAL INFORMATION		GENERAL INFORMATION	
Total area (square kilometres), 2009	330,800	Total area (square kilometres), 2009	676,590
Agricultural area (as a percentage of total area), 2009	24	Agricultural area (as a percentage of total area), 2009	18
Population (1,000 inhabitants), 2010	28,401	Population (1,000 inhabitants), 2010	47,963
Labour force (1,000 workers), 2010	12,660	Labour force (1,000 workers), 2010	28,011
Women in labour force (as a percentage of total labour force), 2010	36	Women in labour force (as a percentage of total labour force), 2010	46
Labour force in agriculture (as a percentage of total labour force), 2010	13	Labour force in agriculture (as a percentage of total labour force), 2010	67
Women in agriculture (as a percentage of labour force in agriculture), 2010	21	Women in agriculture (as a percentage of labour force in agriculture), 2010	48
Gross Domestic Product (GDP) (in millions of US\$), 2010	236,261	Gross Domestic Product (GDP) (in millions of US\$), 2009	18,989
GDP by economic activity (as a percentage of GDP), 2009 (agriculture / industry / services)	9/44/47	GDP by economic activity (as a percentage of GDP), 2009 (agriculture / industry / services)	48/16/36
COMMODITY EXPORT DEPENDENCE		COMMODITY EXPORT DEPENDENCE	
Commodity exports (in millions of US\$ and as a percentage of merchandise exports), 2009-2010	55,953 (32%)	Commodity exports (in millions of US\$ and as a percentage of merchandise exports), 2009-2010	6,484 (78%)
Commodity exports (as a percentage of GDP), 2009-2010	26	Commodity exports (as a percentage of GDP), 2008-2009	31
Exports by commodity groups (as a percentage of total commodity exports), 2009-2010		Exports by commodity groups (as a percentage of total commodity exports), 2009-2010	
All food items	37	All food items	26
Agricultural raw materials	8	Agricultural raw materials	25
Fuels	49	Fuels	43
Ores, metals, precious stones and non-monetary gold	7	Ores, metals, precious stones and non-monetary gold	6
Three leading commodity exports (as a percentage of commodity exports), 2009-2010	55	Three leading commodity exports (as a percentage of commodity exports), 2009-2010	74
(422) Fixed vegetable fats & oils, crude, refined, fract.	21	(343) Natural gas, whether or not liquefied	40
(343) Natural gas, whether or not liquefied	19	(24+25) Forestry products	22
(333) Petroleum oils, oils from bitumin. materials, crude	15	(054) Vegetables	12
Leading destination markets for commodity exports (as a percentage of commodity exports), 2009-2010	52	Leading destination markets for commodity exports (as a percentage of commodity exports), 2009-2010	84
Japan, Singapore, China, EU (27), India	16/13/11/6/6	Thailand, India, China, Japan, Malaysia	48/18/9/5/4
Export concentration ratio	(2000) 0.2185 (2010) 0.1646	Export concentration ratio	(2000) 0.2635 (2010) 0.3233
Membership in international commodity bodies	INBAR, ICCO, IRSG, ITTO	Membership in international commodity bodies	INBAR, ITTO
FOOD SECURITY		FOOD SECURITY	
Commodity import value (in millions of US\$ and as a percentage of merchandise import value), 2009-2010	36,542 (26%)	Commodity import value (in millions of US\$ and as a percentage of merchandise import value), 2009-2010	1,500 (32%)
Net food imports (in millions of US\$), 2010	- 10,824	Net food imports (in millions of US\$), 2010	- 1,308
MDG 1.1: Percentage of population below 1US\$ (PPP) per day, 1990/92 and 2007/09	2 - 0	MDG 1.1: Percentage of population below 1US\$ (PPP) per day, 1990/92 and 2007/09	n.a.
MDG 1.9: Percentage of the population undernourished, 1991 and 2007	5 - 5	MDG 1.9: Percentage of the population undernourished, 1991 and 2007	n.a.



PHILIPPINES		SINGAPORE	
GENERAL INFORMATION		GENERAL INFORMATION	
Total area (square kilometres), 2009	300,000	Total area (square kilometres), 2009	710
Agricultural area (as a percentage of total area), 2009	40	Agricultural area (as a percentage of total area), 2009	1
Population (1,000 inhabitants), 2010	93,261	Population (1,000 inhabitants), 2010	5,086
Labour force (1,000 workers), 2010	39,780	Labour force (1,000 workers), 2010	2,775
Women in labour force (as a percentage of total labour force), 2010	39	Women in labour force (as a percentage of total labour force), 2010	42
Labour force in agriculture (as a percentage of total labour force), 2010	34	Labour force in agriculture (as a percentage of total labour force), 2010	–
Women in agriculture (as a percentage of labour force in agriculture), 2010	24	Women in agriculture (as a percentage of labour force in agriculture), 2010	–
Gross Domestic Product (GDP) (in millions of US\$), 2010	188,402	Gross Domestic Product (GDP) (in millions of US\$), 2010	215,166
GDP by economic activity (as a percentage of GDP), 2009 (agriculture / industry / services)	15/30/55	GDP by economic activity (as a percentage of GDP), 2009 (agriculture / industry / services)	-/26/74
COMMODITY EXPORT DEPENDENCE		COMMODITY EXPORT DEPENDENCE	
Commodity exports (in millions of US\$ and as a percentage of merchandise exports), 2009-2010	6,660 (15%)	Commodity exports (in millions of US\$ and as a percentage of merchandise exports), 2009-2010	63,666 (22%)
Commodity exports (as a percentage of GDP), 2009-2010	4	Commodity exports (as a percentage of GDP), 2009-2010	32
Exports by commodity groups (as a percentage of total commodity exports), 2009-2010		Exports by commodity groups (as a percentage of total commodity exports), 2009-2010	
All food items	43	All food items	10
Agricultural raw materials	4	Agricultural raw materials	1
Fuels	18	Fuels	76
Ores, metals, precious stones and non-monetary gold	35	Ores, metals, precious stones and non-monetary gold	13
Three leading commodity exports (as a percentage of commodity exports), 2009-2010	38	Three leading commodity exports (as a percentage of commodity exports), 2009-2010	81
(682) Copper	18	(334) Petroleum oils or bituminous minerals > 70 % oil	74
(334) Petroleum oils or bituminous minerals > 70 % oil	11	(971) Gold, non-monetary (excluding gold ores and concentrates)	5
(422) Fixed vegetable fats & oils, crude, refined, fract.	9	(112) Alcoholic beverages	2
Leading destination markets for commodity exports (as a percentage of commodity exports), 2009-2010	62	Leading destination markets for commodity exports (as a percentage of commodity exports), 2009-2010	60
China, Japan, United States, Singapore, EU (27)	15/14/12/11/10	Malaysia, China Hong Kong SAR, Indonesia, Australia, China	14/14/13/10/9
Export concentration ratio	(2000) 0.4278 (2010) 0.3224	Export concentration ratio	(2000) 0.2697 (2010) 0.2453
Membership in international commodity bodies	INBAR, ICO, ISO, ITTO	Membership in international commodity bodies	IRSG
FOOD SECURITY		FOOD SECURITY	
Commodity import value (in millions of US\$ and as a percentage of merchandise import value), 2009-2010	17,244 (33%)	Commodity import value (in millions of US\$ and as a percentage of merchandise import value), 2009-2010	89,021 (33%)
Net food imports (in millions of US\$), 2010	2,683	Net food imports (in millions of US\$), 2010	2,923
MDG 1.1: Percentage of population below 1US\$ (PPP) per day, 1990/92 and 2007/09	31 - 23	MDG 1.1: Percentage of population below 1US\$ (PPP) per day, 1990/92 and 2007/09	n.a.
MDG 1.9: Percentage of the population undernourished, 1991 and 2007	24 - 13	MDG 1.9: Percentage of the population undernourished, 1991 and 2007	n.a.



THAILAND		TIMOR-LESTE	
GENERAL INFORMATION		GENERAL INFORMATION	
Total area (square kilometres), 2009	513,120	Total area (square kilometres), 2009	14,870
Agricultural area (as a percentage of total area), 2009	39	Agricultural area (as a percentage of total area), 2009	25
Population (1,000 inhabitants), 2010	69,122	Population (1,000 inhabitants), 2010	1,124
Labour force (1,000 workers), 2010	39,762	Labour force (1,000 workers), 2010	442
Women in labour force (as a percentage of total labour force), 2010	46	Women in labour force (as a percentage of total labour force), 2010	41
Labour force in agriculture (as a percentage of total labour force), 2010	49	Labour force in agriculture (as a percentage of total labour force), 2010	80
Women in agriculture (as a percentage of labour force in agriculture), 2010	45	Women in agriculture (as a percentage of labour force in agriculture), 2010	45
Gross Domestic Product (GDP) (in millions of US\$), 2010	319,293	Gross Domestic Product (GDP) (in millions of US\$), 2009	760
GDP by economic activity (as a percentage of GDP), 2009 (agriculture / industry / services)	12/43/45	GDP by economic activity (as a percentage of GDP), 2009 (agriculture / industry / services)	31/14/56
COMMODITY EXPORT DEPENDENCE		COMMODITY EXPORT DEPENDENCE	
Commodity exports (in millions of US\$ and as a percentage of merchandise exports), 2009-2010	49,912 (29%)	Commodity exports (in millions of US\$ and as a percentage of merchandise exports), 2009-2010	11 (91%)
Commodity exports (as a percentage of GDP), 2009-2010	17	Commodity exports (as a percentage of GDP), 2008-2009	2
Exports by commodity groups (as a percentage of total commodity exports), 2009-2010		Exports by commodity groups (as a percentage of total commodity exports), 2009-2010	
All food items	47	All food items	9
Agricultural raw materials	16	Agricultural raw materials	–
Fuels	17	Fuels	90
Ores, metals, precious stones and non-monetary gold	19	Ores, metals, precious stones and non-monetary gold	–
Three leading commodity exports (as a percentage of commodity exports), 2009-2010	39	Three leading commodity exports (as a percentage of commodity exports), 2009-2010	98
(334) Petroleum oils or bituminous minerals > 70 % oil	14	(342) Liquefied propane and butane	77
(03) Fishery products	13	(333) Petroleum oils, oils from bitumin. materials, crude	13
(231) Natural rubber & similar gums, in primary forms	12	(071) Coffee and coffee substitutes	8
Leading destination markets for commodity exports (as a percentage of commodity exports), 2009-2010	45	Leading destination markets for commodity exports (as a percentage of commodity exports), 2009-2010	96
China, Japan, United States, EU (27), Switzerland	11/10/9/9/6	Republic of Korea, Japan, EU (27)	62/19/15
Export concentration ratio	(2000) 0.1085 (2010) 0.0857	Export concentration ratio	(2000) n.a. (2010) 0.6683
Membership in international commodity bodies	ICO, ILZSG, IRSG, ISO, ITTO	Membership in international commodity bodies	ICO
FOOD SECURITY		FOOD SECURITY	
Commodity import value (in millions of US\$ and as a percentage of merchandise import value), 2009-2010	52,829 (33%)	Commodity import value (in millions of US\$ and as a percentage of merchandise import value), 2009-2010	120 (45%)
Net food imports (in millions of US\$), 2010	- 16,404	Net food imports (in millions of US\$), 2010	65
MDG 1.1: Percentage of population below 1US\$ (PPP) per day, 1990/92 and 2007/09	6 - 11	MDG 1.1: Percentage of population below 1US\$ (PPP) per day, 1990/92 and 2007/09	n.a. - 37
MDG 1.9: Percentage of the population undernourished, 1991 and 2007	26 - 16	MDG 1.9: Percentage of the population undernourished, 1991 and 2007	39 - 31



VIET NAM	
GENERAL INFORMATION	
Total area (square kilometres), 2009	331,050
Agricultural area (as a percentage of total area), 2009	31
Population (1,000 inhabitants), 2010	87,848
Labour force (1,000 workers), 2010	46,910
Women in labour force (as a percentage of total labour force), 2010	48
Labour force in agriculture (as a percentage of total labour force), 2010	63
Women in agriculture (as a percentage of labour force in agriculture), 2010	49
Gross Domestic Product (GDP) (in millions of US\$), 2010	99,312
GDP by economic activity (as a percentage of GDP), 2009 (agriculture / industry / services)	21/40/39
COMMODITY EXPORT DEPENDENCE	
Commodity exports (in millions of US\$ and as a percentage of merchandise exports), 2009-2010	27,009 (42%)
Commodity exports (as a percentage of GDP), 2009-2010	28
Exports by commodity groups (as a percentage of total commodity exports), 2009-2010	
All food items	48
Agricultural raw materials	9
Fuels	37
Ores, metals, precious stones and non-monetary gold	5
Three leading commodity exports (as a percentage of commodity exports), 2009-2010	56
(333) Petroleum oils, oils from bitumin. materials, crude	28
(03) Fishery products	18
(042) Rice	10
Leading destination markets for commodity exports (as a percentage of commodity exports), 2009-2010	57
China, EU (27), United States, Japan, Australia	17/12/10/9/9
Export concentration ratio	(2000) 0.2444 (2010) 0.1406
Membership in international commodity bodies	INBAR, ICO, ISO
FOOD SECURITY	
Commodity import value (in millions of US\$ and as a percentage of merchandise import value), 2009-2010	20,760 (27%)
Net food imports (in millions of US\$), 2010	- 8,572
MDG 1.1: Percentage of population below 1US\$ (PPP) per day, 1990/92 and 2007/09	64 - 13
MDG 1.9: Percentage of the population undernourished, 1991 and 2007	31 - 11